

2009 WYOMING™ FIFTH WHEELS

COACHMEN®

WYOMING



# WYOMING



*The modern island kitchen with residential style cabinetry is the centerpiece for great times together. Enjoy big time elegance, with a designer pull-out faucet, upgraded polished countertops (Anniversary Edition only), crown moldings, abundant drawer and cupboard space, and toe kicks in the cabinet base.*

Designer touches like fluted wood accents, crown molding, oil rubbed bronze hardware and designer furnishings create a warm inviting atmosphere that sets the tone for elegant living.

# LIVE LUXURIOUSLY

*Live large. Entertain family and friends. The 80" wide hide-a-bed sofa comfortably seats three adults and converts to a queen size bed for additional sleeping space. Enjoy a residential style dinette or available booth dinette with a view through large windows. (364 SIQS shown with Brazilian Cherry cabinetry.)*

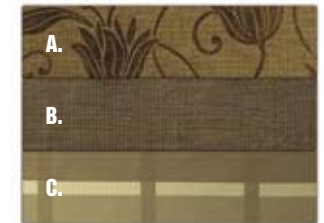


## DECOR SELECTIONS FABRIC KEY:

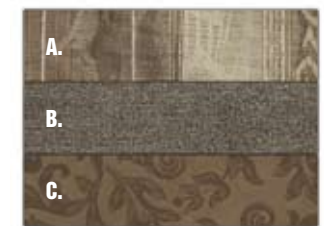
- A. Main
- B. Accent
- C. Bedspread



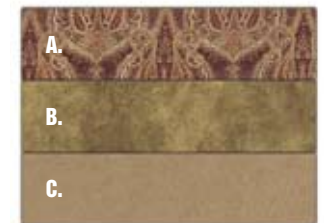
Baroque Beige



Century Moss



Cobblestone Suede



Cinnabar Sand



Everyone can spread out and relax in Wyoming's ample living room featuring soft touch recliners, an inviting fireplace, a convenient desk, and a huge 32" LCD TV. (364 SIQS shown with Brazilian Cherry cabinetry)

# WYOMING

# EXPERIENCE THE BIG LIFE

Expand your horizons. Why not visit the places you've always wanted to see in comfort and style? Wyoming lets you explore your world in a big way. With so much luxury and living space, you'll want to go as far as your dreams take you. And when you return home, you'll be ready to plan the next grand adventure.



Relax and refresh in Wyoming's lavishly styled bedroom complete with directional lighting, large mirrored closets and plenty of wardrobe storage. King bed with pillow top mattress is standard (queen bed is optional).



The Wyoming is big on the important details, like a residential style dresser, plenty of closet space, and room for a 19" LCD TV option.



Wyoming's spacious bathroom includes a large radius shower with a well appointed vanity area.



Wyoming's notched front cap design allows up to a 90° turning radius on most shorter bed pickup trucks, for added maneuverability.

## EASY TO MANEUVER TURN RITE FRONT CAP

WYOMING FIFTH WHEELS	332 RLTS	335 RETS	338 RLQS	362 SITS	364 SIQS
Base Weight	9,825	9,637	10,960	10,267	11,016
Carrying Capacity	4,084	4,170	2,986	3,903	3,237
Hitch Weight	1,909	1,807	1,946	2,170	2,253
Interior Height (upper deck)	6'6"	6'6"	6'6"	6'6"	6'6"
Exterior Height*	13'	13'	13'	13'	13'
Exterior Length	37'6"	37'6"	38'11"	38'1"	38'
Exterior Width	8'	8'	8'	8'	8'
Awning Length	14'	14'	14'	14'	14'
Sleeping Capacity	6	6	6	6	6
Exterior Storage Capacity (cu. ft.)	92	92	92	92	92
Fresh Water Capacity (gal.)	60	60	60	60	60
Waste Water Capacity (gal.)	45	45	45	45	45
Grey Water Capacity (gal.)	90	90	90	90	90
Water Heater Capacity (gal.)	10	10	16**	10	16**
Tire Size	16"	16"	16"	16"	16"
LP Gas Capacity (lbs.)	60	60	60	60	60
Furnace Rating (x 1,000) BTU	40	40	40	40	40

\*Includes Roof A/C

\*\*16-Gallon Effective

**Base Weight:**  
The weight of the unit with no fluids, cargo, optional equipment or accessories.

**Carrying Capacity:**  
This is the amount of weight available for all fluids, cargo, optional equipment and accessories. The actual "loaded" weight will depend on the equipped unit and the owner's individual choice of cargo, etc.

## FIRST CLASS FEATURES

CL = Classic (Includes 332 RLTS, 335 RETS and 362 SITS) AE = Anniversary Edition (Includes 338 RLQS and 364 SIQS)

	CL	AE		CL	AE		CL	AE
<b>LIVING APPOINTMENTS</b>						<b>EXTERIOR AND CONSTRUCTION</b>		
Brazilian Cherry cabinetry	S	S	Lighted power range hood	S	S	Skylight over shower	P	P
Legacy Glazed Birch cabinetry	O	O	Large double door refrigerator	P	P	Glass shower enclosure	P	P
Base cabinets with toe kicks	S	S	Residential refrigerator with inverter	-	O	Marbled shower surround	S	S
Hardwood cabinet doors	S	S	Designer refrigerator door inserts	P	P	Outside spray station	P	P
Techwood drawer sides	S	S	Microwave oven	P	P	<b>HEATING AND AIR CONDITIONING</b>		
Oil rubbed bronze hardware	S	S	Double bowl kitchen sink	S	S	40,000 BTU E.I. furnace	S	S
Linoleum flooring (kitchen and bath)	S	S	Kitchen sink covers	S	S	15,000 BTU ducted roof air conditioner	P	P
Carpet (living and bedroom)	S	S	Wireless rear backup camera	-	S	Even Cool™ insulated A/C ducting	S	S
Pleated window shades	P	P	Upgraded recliner chairs (Ultraleather on AE)	S	S	Wire and framing for 2nd air conditioner	S	S
Designer window treatments	S	S	Ultra leather furniture upgrade (includes sofa, recliners and dinette chairs)	O	O	11,000 BTU bedroom air conditioner	O	O
80" wide hide-a-bed sofa	P	P	Desk chair (332 RLTS, 338 RLQS, 362 SITS, 364 SIQS)	O	O	Ceiling fan with light kit	S	S
Ultraleather furniture upgrade (includes sofa, recliners and dinette chairs)	O	O	Jumbo booth treatments with pedestal table	O	O	Comfort air ventilator fan	-	O
Residential dinette with four chairs	S	S	Residential dinette with four chairs	S	S	Attic vents	-	S
Skylight in living area	-	P	Fireplace	O	O	Power bath vent	-	S
Polished solid surface countertops	-	S	Designer bedsprad	S	S	<b>ELECTRICAL AND LIGHTING</b>		
Designer thermofoil countertops	S	-	Bedlift storage system (master bed)	S	S	Halogen lighting package	S	S
Waste basket	S	S	Residential styled dresser	S	S	Patio light	S	S
Central vacuum system	-	S	Padded window bench seat with storage (most models)	S	-	Hitch light	S	S
<b>SLEEPING APPOINTMENTS</b>						Entry step light	-	S
King bed with pillow top mattress (72" x 80")	S	S				SureLine™ electrical harness	S	S
Queen bed with pillow top mattress (60" x 80")	O	O				50 amp service	S	S
Decorative headboard	S	S				55 amp electronic converter	S	S
Designer bedsprad	S	S				12 volt main battery disconnect	S	S
Bedlift storage system (master bed)	S	S				GFI circuits	S	S
Residential styled dresser	S	S				5.5K gas generator with built in fuel tank	O	O
Padded window bench seat with storage (most models)	S	-				<b>PLUMBING AND LP SYSTEM</b>		
<b>APPLIANCES AND ACCESSORIES</b>						Double 30 lb. LP bottles with auto change-over	S	S
5.1 surround sound system with DVD/CD player	P	P				Designer kitchen faucet with pull-out sprayer	S	S
32" LCD television (HD ready)	S	S				10-gallon gas/electric E.I. water heater	S	-
19" LCD television - bedroom	-	S				E.I. water heater	-	S
Cable TV jacks (coach and bedroom)	P	P				Water heater by-pass valve	S	S
Pre-wired for satellite dish	S	S				Porcelain toilet with foot pedal flush	S	S
Phone jack	S	S				His and hers dual bath lavs (select models)	S	S
TV antenna	P	P				Black tank flush	S	S
3-burner range with oven	S	S				Monitor panel	S	S
Range cover	P	P				Washer and dryer ready	S	S
						Demand water pump	S	S

KEY: S = Standard O = Optional P = Essential Package\*  
\*Essential package items are required options.

## CONSTRUCTION FEATURES



**R-VALUES:**  
Roof (R-13.4)  
Walls (R-11.1)  
Floor (R-20.6)



Exterior storage on the Wyoming is huge with up to 92 cubic feet of pass through exterior storage.



Extend the camping season with heated tanks, and a fully enclosed underbelly with Astro-Foil® insulation.

## THESE COACHMEN EXCLUSIVE FEATURES ARE BUILT RIGHT IN:



SureLine™ custom wiring harness provides color coded wires grouped together in a protective autoloam covering. Specific wiring schematics make for easy serviceability.

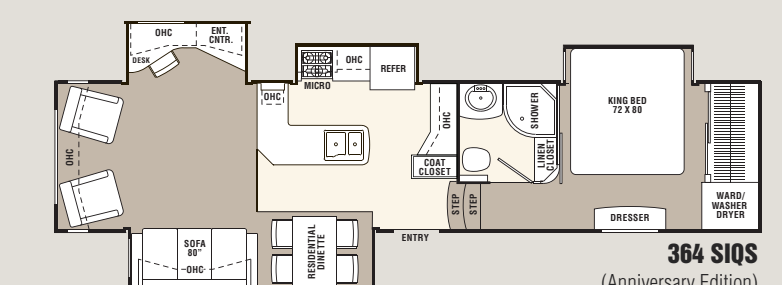
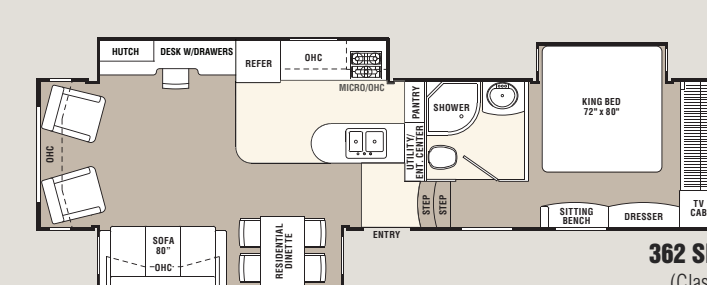
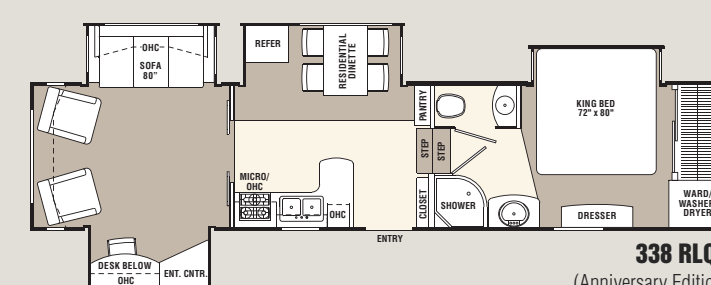
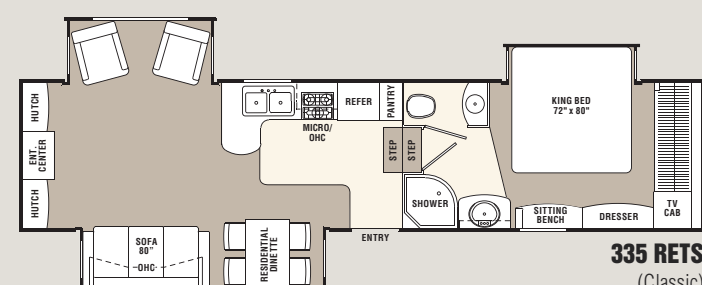
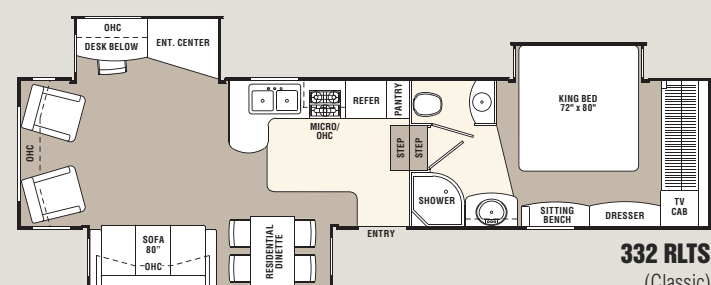


Maximize your cooling efficiency with the Even Cool™ air conditioning system. Insulated ductwork with radiused corners provides for smooth air flow.



Aircraft grade aluminum framed construction throughout the walls and floor, provides a solid and lightweight superstructure for the Wyoming.

KEY:  
■ Carpet  
□ Linoleum





## WYOMING

### EASY TO USE. REALLY.

Pete symbolizes our commitment to being your best friend on the road. Like Pete, we're always there to make sure your Coachmen RV is as easy and uncomplicated as possible, so you can escape life's hassles and enjoy RVing more.

Your Coachmen RV will be easy to buy, easy to use and easy to own. That's our promise to you. We accomplish this through clever designs and superior support after the sale. But the real measure of "easy" is in the countless thoughtful touches we include throughout your new Coachmen RV.

### EASY TO OWN. HONEST.

Our commitment to you is your ongoing satisfaction. Dealers are authorized to solve your problems on the spot and get you on your way without fuss or hassle. Should you ever need service or repair, it is easy to find one of the hundreds of Coachmen dealers or authorized repair centers nationwide.

Our toll-free service hotline (**800-453-6064**) and online service support center put you in touch with a Coachmen service representative, warranty information, maintenance information, troubleshooting tips, dealer locations and other helpful information. Coachmen. You couldn't ask for an easier traveling companion.

### TRAVEL EASY™. ALWAYS.

RVing is easier with Coachmen's Travel Easy™ Roadside Assistance included for the first year on most new motorized and towable Coachmen RVs\*. Administered by Coach-Net®, this service provides you with 24/7 operational, technical and emergency road service coverage. Anywhere. Anytime. Travel Easy™ is the security of knowing that help is an easy phone call away. \*See your dealer for details.



# Coachmen

Coachmen Recreational Vehicle Company, LLC

Life should be so easy. P.O. Box 30, Middlebury, IN 46540



### EASY TO ENJOY. SERIOUSLY.

Purchase a new Coachmen RV and receive a free one-year membership in the Coachmen Owner's Association (C.O.A.).

You'll enjoy exclusive discounts at campgrounds, theme parks and fuel stations. You'll also receive concierge service 24/7 so you can find and buy what you need, often at big discounts!

Other benefits include trip routing, vacation packages, event reservations, mail forwarding and our helpful owners magazine — Easy RVing. Plus annual camping events, a support network and services for first-time buyers.

Take advantage of your C.O.A. membership today by calling **888-422-2582**.



To see how Coachmen is making the easy life even easier, visit [www.easyRVing.com](http://www.easyRVing.com) or call **1.800.353.7383**.

All information contained in this brochure is believed to be accurate at the time of publication. However, during the model year, it may be necessary to make revisions and Coachmen reserves the right to make all such changes without notice, including changes in prices, colors, materials, equipment and specifications, as well as the addition of new models and the discontinuance of models shown in this brochure. Therefore, please consult with your Coachmen dealer and confirm the existence of any materials, design or specifications that are material to your purchase decision.

©2008 Coachmen Recreational Vehicle Company, LLC. All rights reserved. Printed in USA 6/08